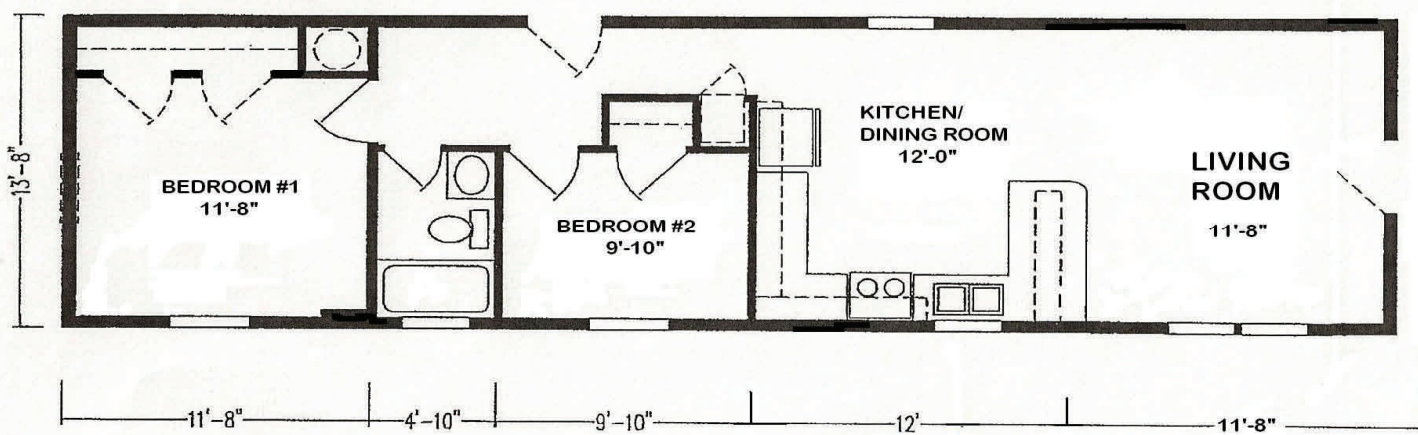




**Photo
Coming Soon!!**

**Photo
Coming Soon!!**

**Photo
Coming Soon!!**



Home Square Footage: 700
Bedrooms: 2
Bathrooms: 1
Monthly Lot Rent: \$416*

Exterior Features: Paved Driveway,
Vinyl Skirting, Front and Rear Steps

*Monthly Lot Rent includes weekly trash removal, and plowing and maintenance of community streets. Water and Sewer are billed separately through the City of Portsmouth. The homeowner is responsible for maintaining their own lawn and plowing their own driveway.

Oak Springs Construction Features and Special Options:

- Vinyl Windows with Grids
- Oak Cabinets and Moldings
- Vinyl Covered Sheetrock Throughout
- Oil Rubbed Bronze Accessory Package
- Cabinet Over Refrigerator
- Door on Electrical Panel Box
- Shelf Above Washer/Dryer Area
- Freeze Proof Exterior Faucet
- 16" O.C. Roof Rafters
- Recessed Can Lights in Kitchen
- Energy Star Program
- Shutters at all Windows Where Possible
- Digital Programmable Thermostat
- Medicine Cabinet or Mirror over Vanity
- 40lb Roof Load
- 7/16" OSB Wall Sheathing
- Whirlpool Appliances
- 2x8 Floor Joists
- 16" O.C. Exterior Walls
- Single Lever Kitchen Faucet with Spray
- R-38/R-21/R-33 Insulation Package
- Center Shelf in Kitchen Base Cabinets
- 40 Gallon Electric Water Heater
- Water Shutoffs Throughout
- Perimeter Heat Registers
- TV and Phone Jacks
- Appliance Package
- Raised 6-Panel Interior Doors
- Mini Blinds at All Windows
- Bedroom Ceiling Lights
- Delta Faucets
- One-Piece Fiberglass Tubs/Shower
- Concealed Cabinet Door Hinges
- 100 Amp Electrical Service
- 2x6 Exterior Wall Construction
- Shelving in Closets
- Shelf Above Laundry Hookups
- Formica Backsplash in Kitchen and Baths
- Single Control Tub Diverter
- Whole House Water Shutoff
- Additional Kitchen Cabinets
- Ceiling Fan in Living Room
- Exterior Receptacle
- 9-Lite Rear Door
- Ceiling and Door Trim
- Copper Wiring Throughout
- Handicap Toilet
- Shelf Above Vanity
- Adjustable Shelving in Overhead Cabinet

Thank you for your interest in State Manufactured Homes and Hillcrest Estates Manufactured Housing Community. Hillcrest Estates is conveniently located at 3201 Lafayette Road in Portsmouth, New Hampshire, near the North Hampton line. Hillcrest Estates remains one of the Seacoasts' hidden secrets for Affordable Living. With its spacious house lots, beautiful open spaces, very well kept older manufactured homes and exciting new homes, Hillcrest Estates is a much sought after place to call home.

To Request Pricing