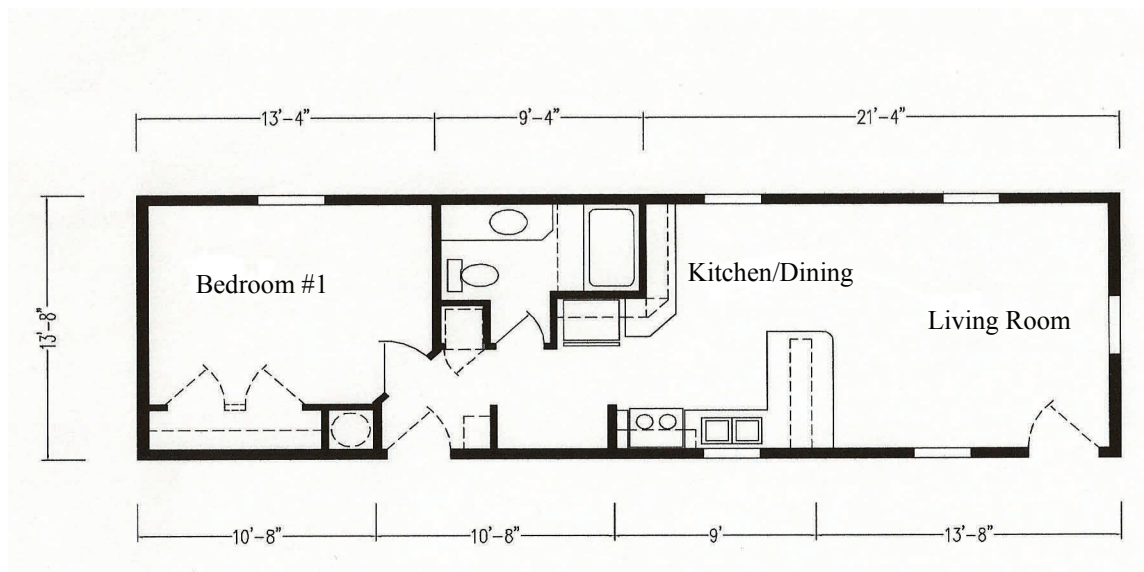




**Picture  
Coming Soon!!**

**Picture  
Coming Soon!!**

**Picture  
Coming Soon!!**



**Home Square Footage: 616**  
**Bedrooms: 1**  
**Bathrooms: 1**  
**Monthly Lot Rent: \$406\***

**Exterior Features: Paved Driveway, Oil Tank,  
Vinyl Skirting, Front and Rear Steps**

**\*Monthly Lot Rent includes weekly trash removal, and plowing and maintenance of community streets. Water and Sewer are billed separately through the City of Portsmouth. The homeowner is responsible for maintaining their own lawn and plowing their own driveway.**

### **Oak Springs Construction Features and Special Options:**

- Vinyl Windows with Grids
- Flat Panel Oak Cabinets
- Center Shelf in Kitchen Base Cabinets
- Formica Backsplash in Bath
- Cabinet Over Refrigerator
- Shelf Above Bath Vanity
- 30 Gallon Electric Water Heater
- Water Shutoff at Water Heater
- Freeze Proof Exterior Faucet
- Glass Block Window in Bath
- (2) Phone Jacks
- Ceiling Fan in Living Room
- Energy Star Program
- Shutters at all Windows Where Possible
- Digital Programmable Thermostat
- Delta Faucets
- One-Piece Fiberglass Tubs/Shower
- Concealed Cabinet Door Hinges
- Cabinet Hardware in Kitchen
- 2x8 Floor Joists
- 16" O.C. Exterior Walls
- Single Lever Kitchen Faucet with Spray
- R-38/R-21/R-33 Insulation Package
- Linen Closet
- Door on Electrical Panel Box
- 54" Shower in Bath
- Water Shutoffs Throughout
- Linoleum at Living Room Entry
- Recessed Medicine Cabinet in Bath
- (2) TV Jacks
- Appliance Package
- Raised 6-Panel Interior Doors
- Mini Blinds at All Windows
- Ceramic Tile Backsplash in Kitchen/Baths
- Overhead Cabinets in Laundry Area
- White Molding Package
- Adjustable Shelving in Overhead Cabinets
- Overhead Cabinet at Refrigerator
- 7'6" Exterior Sidewall Height
- 2x6 Exterior Wall Construction
- Formica Backsplash in Kitchen
- Shelf Above Laundry Hookups
- Adjustable Overhead Shelves
- Miller Oil Furnace
- Single Control Tub Diverter
- Whole House Water Shutoff
- Perimeter Heat Registers
- 16" O.C. Roof Rafters
- Bedroom Ceiling Light
- Exterior Receptacle
- 9-Lite Rear Door
- Ceiling and Door Trim
- Angled Archways
- 40lb Roof Load
- 7/16" OSB Wall Sheathing
- Medicine Cabinet or Mirror over Vanity

**Thank you for your interest in State Manufactured Homes and Hillcrest Estates Manufactured Housing Community. Hillcrest Estates is conveniently located at 3201 Lafayette Road in Portsmouth, New Hampshire, near the North Hampton line. Hillcrest Estates remains one of the Seacoasts' hidden secrets for Affordable Living. With its spacious house lots, beautiful open spaces, very well kept older manufactured homes and exciting new homes, Hillcrest Estates is a much sought after place to call home.**

**To Request Pricing**